

Jubilee!

Bunny Hill Designs



Take an elegant Damask, surround it with little running bunnies, and offer it in seven beautiful color combinations and you'll have the main fabric in Jubilee. The colors are brighter, the fabrics are classic and now we've introduced mauve as a new color. I love this fabric line and I hope you do too! It's a "Jubilee" of colors and prints!



BHD 2056 or BHD 2056G — Monster Madness 50"X 52"

№ *2853 19 Mauve



№ 2848 22 Mauve



№ *2852 16 Mauve



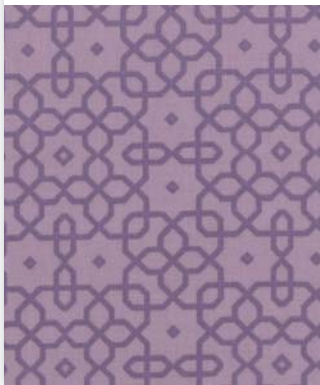
№ 2855 14 Mauve



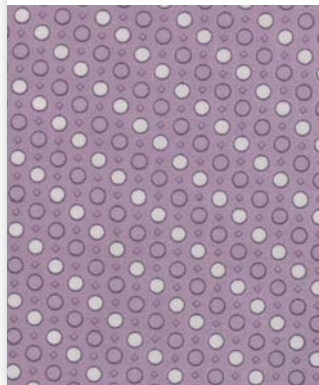
№ 2853 14 Cream Mauve



№ *2854 17 Mauve



№ *2845 32 Mauve



№ 2852 23 Dark Grey



№ *2852 17 Pale Grey



№ *2853 20 Grey



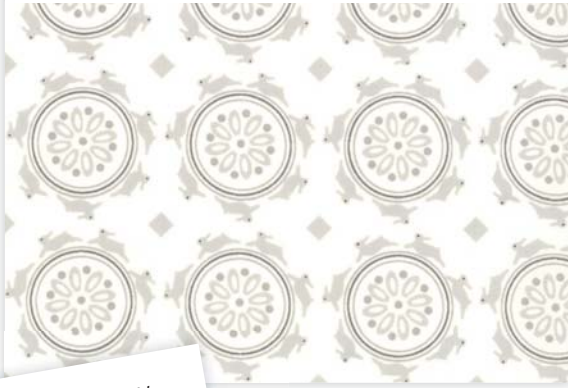
№ 2845 34 Grey



№ 2854 18 Grey



№ 2853 15 Cream Grey



№ 2852 11 Pale Pink



№ *2848 23 Grey



№ *2855 15 Grey



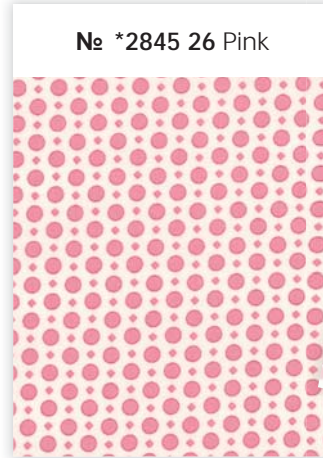
№ 2855 11 Pink



№ *2854 11 Pink



№ *2845 26 Pink



№ *2853 11 Cream Pink



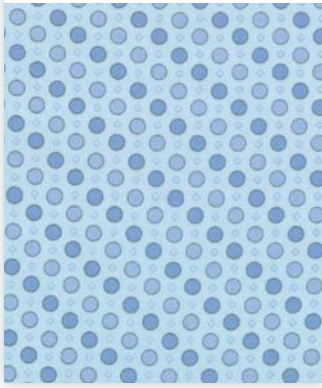
№ *2852 12 Bright Pink



№ 2848 17 Pink



№ 2845 28 Blue



№ *2854 13 Blue



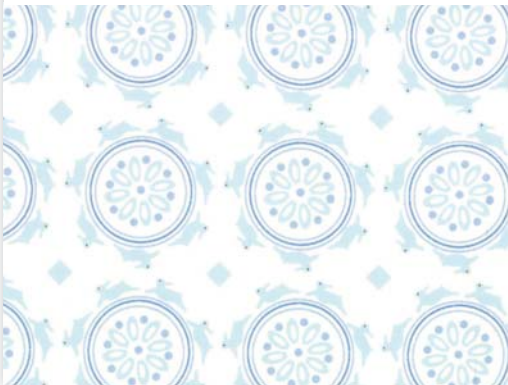
№ 2852 13 Pale Blue



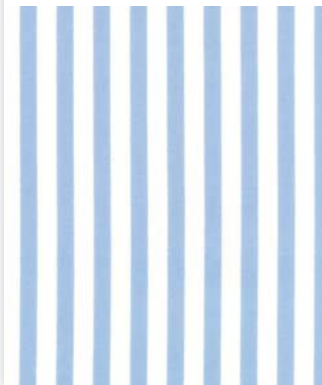
№ *2855 12 Blue



№ 2853 12 Cream Blue



№ *2848 19 Blue



№ *2853 17 Blue



№ *2852 14 Bright Blue



Jubilee!

Bunny Hill Designs

MARCH DELIVERY



SKUS: 30 PRINTS

44" -45" 100% PREMIUM COTTON

- Asst. 2850-15 15 Yards of Each
- Asst. 2850-10 10 Yards of Each
- Asst. 2850-10H 10 Yards of 17 Skus
- 2850AB 34 Skus 18"x 22"
- 2850F8 34 Skus 9"x 22"
- 2850JR (40) 2½"x 45" Strips - PK 4
- 2850LC (42) 10"x10" Squares - PK 4
- 2850MC (42) 2½"x 2½" Squares - PK 24
- 2850PP (42) 5"x5" Squares - PK 12